

Yes! It's here ... the new release of *Lottery Director*.

The new Lottery Director software is now shipping to players. This new release completely replaces the older version.

In the next three issues, starting with this one, we'll focus on some of the new LD's menus. And -- as you'd expect -- future issues of your *WinIt!* newsletter will be exploring ways of using this new software.

What's New? . . .

Plenty. There are hundreds of new features and improvements. Here are a few examples.

- To start, there are major additions to the Lotto and Daily programs, and more. In the Daily program, you can see your playing cost, with how many Jackpots you're matching. You can adjust the picks -- with a key, or a click of your mouse -- for your *lowest cost* and *highest wins*.
- In the Lotto program, there's a new menu selection called 'Find Best Pick Lines' -- it shows you which lines are *consistently picking* the most winners -- automatically. It takes one key, or one mouse click.
- There's a new 'cleaner' look, with colors showing key information. And more Help.
- And, there's a *completely new program* added: your 'FastTrack' Game Manager!

Good luck -- and *WinIt!*

CDEX

In this issue . . .

- **The NEW Lottery Director**

Part 1 . . .
Your Starting Menus

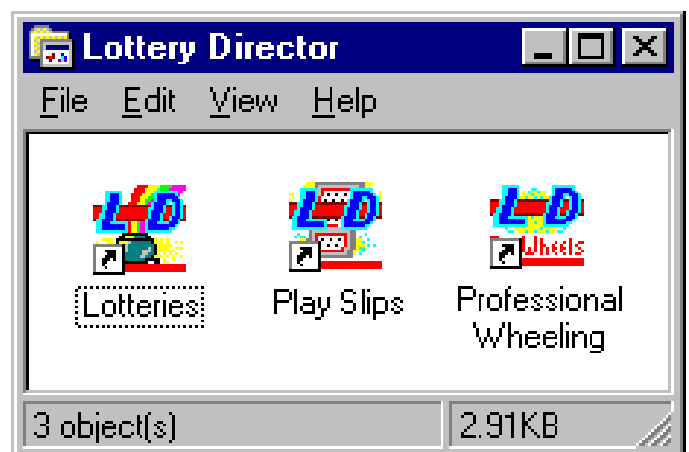
The NEW Lottery Director

Part 1 ... Your Starting Menus

In this issue, you'll get a preview of the major starting menus in the new Lottery Director.

If you're an experienced LD player, you'll see some old friends in the menus. You'll also see some new faces. If you're a new player, you'll find LD is easier than ever to use.

If you're running Windows 95 or 3.1, here are the three icons on your Windows desktop:



Double-click on your **Lotteries** icon to start.

Or if you use DOS, type **GO** and press Enter.

(Continued on the next page ...)

Getting Started: When you start, you'll see your familiar Lottery Director Selections menu:

Notice the new program on this menu?

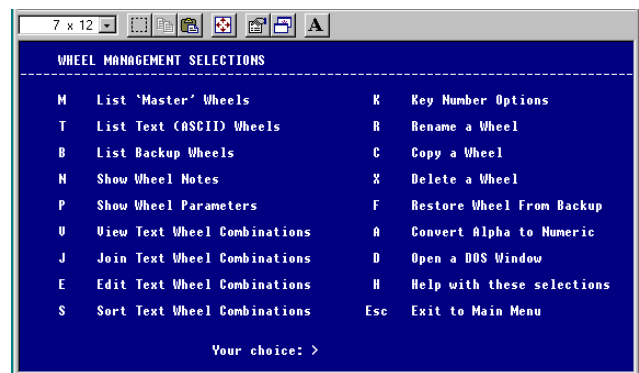
You have a new 'FastTrack' Game Manager. It replaces the 'FastWheel' on this menu.

Note: the wheel is still there -- it's part of the new Game Manager now.

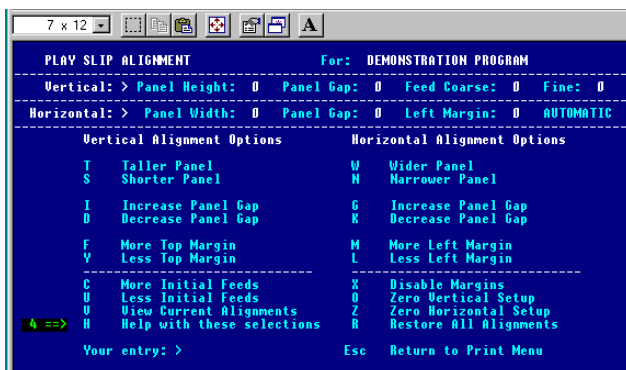
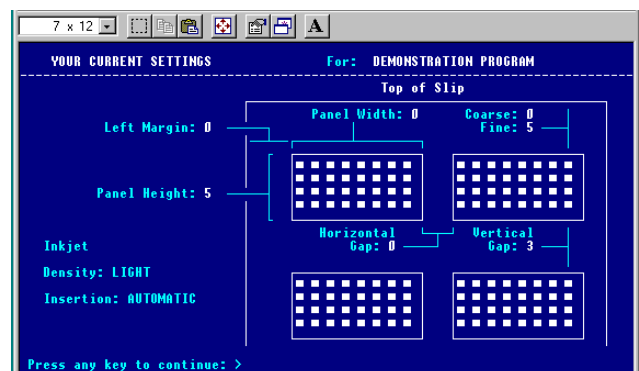
Your 'FastTrack' Game Manager is a way to *pull the key information* out of your game, and *compare your game with other games*. It's very easy to use -- and can surprise you!



Professional Wheeling: Your two menus for Professional Wheeling are unchanged. The major changes are in the programs themselves. Your automatic wheeling programs are faster:



Print Play Slips: Alignment of the 'marks' (where they get printed on your play slips) is easier:



There are more play slip layouts supplied with the program. You can easily make a new slip layout if a new game starts in your area.

Next Month . . .

You've just seen a 'snapshot' of the opening menus. In next month's issue, you'll see the menus in your 'FastTrack' Game Manager.

... Look for some interesting facts!