

Once again we begin a New Year, which always brings out peoples' wishes for good things that we hope will happen.

For the world, we hope the year will be marked by peace. For family and friends, we wish everyone good health and a smooth journey through the days and months ahead.

We'd like to add one more wish for players: We hope 1997 brings you the best of success -- as well as enjoyment -- in playing your favorite lottery games.

This Issue: This *WinIt!* issue is a little different from past issues.

As you know, most issues tend to focus on a major topic in Lottery Director. Usually they explore an LD feature in detail and depth.

In this issue, you'll see a 'collection' of tips - ranging over several areas of your software.

And . . . a New Year for WinIt!

With this issue, your *WinIt!* newsletter enters its *sixth* year of publication.

During the new year, we'll continue to give you up-to-date tips and ideas for using your Lottery Director software.

This newsletter is *your newsletter*. Many of the past articles have been suggested by LD players. Indeed, many of *the software's features* are the result of players' suggestions. Keep telling us what you'd like to see!

Good luck -- and *WinIt!*

CDEX

In this issue . . .

- ***Renewing Our Pledge to You***
- ***Technical Support***
- ***A 'Collection' of LD Tips***

Renewing Our Pledge to You

In each New Year issue we state our pledge to Lottery Director players. Let's renew it now.

- For 1997, we'll continue to supply to you the finest lottery game software, combined with top quality materials and support.
- We'll continue to maintain the highest ethical standards among lottery software producers. *You deserve it.*
- We respect your right to complete privacy. We *do not* release LD players' names, addresses, or other information to mail lists, advertisers, or other places.

Technical Support

Have a question? Technical support is available by telephone hotline. Call us Monday - Friday: 7:00 - 10:00 PM (Eastern).

Visit us on the Internet! Join us, together with other players in the AOL Lottery Players forum. Or send e-mail to: cdex@aol.com

We also track Internet Lottery Newsgroups. Post a message there, and we'll respond.

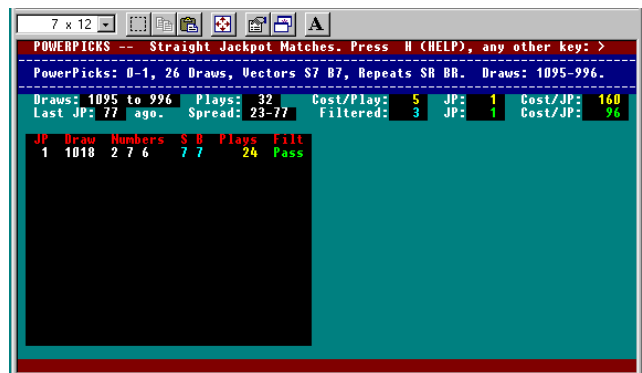
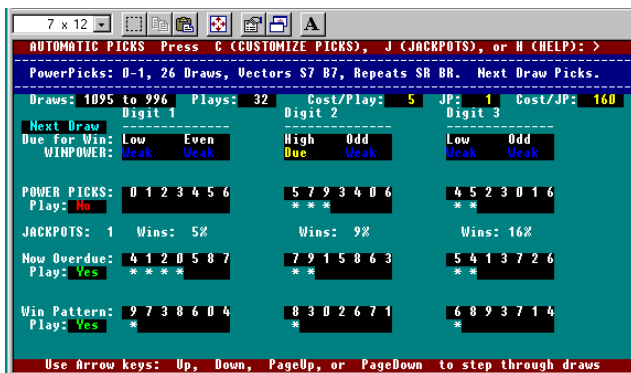
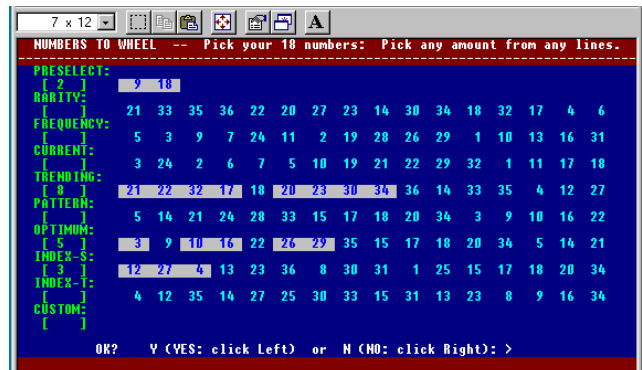
A 'Collection' of Tips

Automatic Picks for Lotto: In your Lotto program, you have eight kinds of Automatic Pick selections. (See the screen at right.) Your guidebook explains how they work. Unless you have a reason for selecting more, limit your picks to the *left* 10 or 12 numbers in each line. These are the line's best picks.

To see how they're winning, use your WINS menu. Look at 'Check Winning Picks' and 'Find Best Pick Lines' on that menu.

When you check the winning record, set the Pick Size to the same amount of numbers (10 to 12).

Automatic Picks for Pick-3 and Pick-4: You have Automatic Picks in your Daily program also. Use 'Check Your Automatic Picks' on your PICK menu, to check their winning record. You'll see picks for the next draw. And you can see the past winning record (below, at the left). You can also see the Straight Jackpot record - both with automatic filtering and without it (right). Remember, you can customize the picks to get your best balance between wins and playing cost.



Setting Holiday Draws: Some lottery games change their drawing schedule during holidays. For example, they might skip a drawing on 12/25. Or they might draw on 12/24 or 12/26 instead. If your game does this, use your 'Lottery Organizer/Planner' (on the Lotto program WINS menu) to make any changes. If your game did not change its schedule, you can ignore this suggestion.

Getting Ready for '2000': If you've been following the news, you're probably hearing about the problems that many software programs will have -- when the world enters the next millenium. Going from the year 1999 to 2000 can cause havoc with the way some programs track their dates. *No problem here* -- your Lottery Director software is *already* setup and *fully ready* for that event.

Sorting Your Lotto Wheels: How do you keep track of 800 wheeling systems? Remember, you can sort the Wheels Directory. You can list your wheels according to their prize guarantees, costs, numbers, and so on. Use the 'sort keys' at the top of each column on your screen.

Filtering Your Game's Win History: In both your Lotto and Daily programs, you can filter your game's draws - to find Sums, Even/Odd, Repeats, and much more. Use your SCAN option. You can view and print the history -- or, send it to a 'text' file for importing into other programs.