

Here is another example of the kinds of reports you can make with your new 'Fast Track' Game Manager program.

Your 'Fast Track' Game Manager is part of your Lottery Director software. It is ready for you to use at any time with your games.

In past issues, you've seen how 'Fast Track' can scan all of the Lotto games automatically and put them together in one report. You can easily compare your game against the others. You can enter a set of numbers, and see how they have been winning in multiple games.

Now in this new *WinIt!*, you'll see a different part of your 'Fast Track' program.

Your program has another kind of ability to scan all games – automatically, with a click. Then you can see any game's history, Sums, Even/Odd, Low/High, Consecutives, Repeats, Groups -- *plus* its High and Low Winners, Consistent, Trending, and Overdue numbers.

How easy is it to get information like this? **It takes just one click.** That's all.

This can be an exciting part of your play. You'll get your game information so easily. And you might see surprises in the results!

Good luck -- and *WinIt!* CDEX

Visit Your WEB SITE !!

Lottery Director on the World Wide Web
...

★ <http://www.ldir.com> ★

In this issue . . .

- **Making 'Internet' Reports**

Making 'Internet' Reports

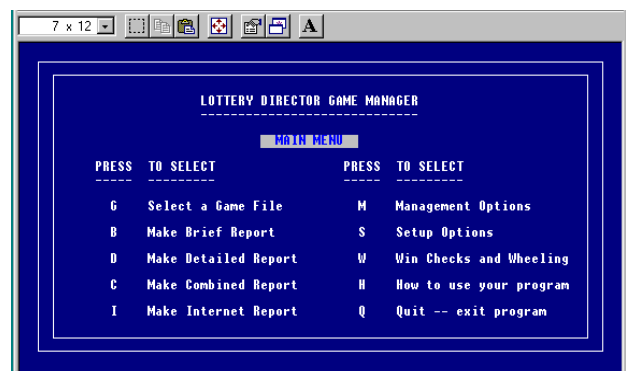
Why is a report called an 'Internet' report?

There's a good reason. Your 'Fast Track' program will produce the report in a layout called an 'HTML' layout. This is a standard layout that every Internet 'browser' program recognizes.

So, if you already have some kind of Internet browser program in your PC, you can view the games directly in it. ('HTML' stands for 'HyperText Markup Language' – but you don't need to remember that!)

If you don't have an Internet browser in your PC – no problem! You can view the reports with your 'Fast Track' program's viewer.

Ready? Start your 'Fast Track' program.



Select: I Make Internet Report. **That's all!**

(Continued on the next page . . .)

Viewing the 'Internet' Reports

Now, you have a complete set of reports -- for each USA game, Canada, and International games.

If you **do not have** an Internet browser in your PC - go to your 'Fast Track' Management Menu, and select: I View Internet Reports. You'll see a list of all the game reports. Choose any one.

If you **do have** an Internet browser program - such as Internet Explorer or Netscape Navigator - you can use it to view your reports. You'll find all of your Lottery Director Internet reports in your: **C:\LDIR\ITFILES** folder. Double-click on any report to view it in your browser.

Here's a *small portion* of the *top section* of a report. This is for the France 6/49 Evening game. This top part shows the complete draw history of the game - starting with the latest draw.

Address: C:\LDIR\ITFILES\FRLN.HTM

***** Presented by: LOTTERY DIRECTOR ** FAST TRACK ** GAME MANAGER *****

LOTTERY DIRECTOR (r): (c) CDEX SOFTWARE, The CDEX Group, Chester, NH

Game: FR 6/49 France Nuit

Picks: 6 Numbers: 49
Draws: 7 Type: Lotto
Last Draw: 11/15/97 Total Draws: 1836

11/15/97 Sat	1836)	20	25	33	37	39	40	B: 48
11/12/97 Wed	1835)	4	14	18	24	28	30	B: 32
11/08/97 Sat	1834)	15	17	32	35	41	47	B: 27
11/05/97 Wed	1833)	20	24	37	41	44	49	B: 23
11/01/97 Sat	1832)	3	19	29	31	33	45	B: 7
10/29/97 Wed	1831)	5	23	24	30	43	47	B: 21
10/25/97 Sat	1830)	4	9	13	16	23	49	B: 30
10/22/97 Wed	1829)	3	6	17	29	37	43	B: 5
10/18/97 Sat	1828)	11	21	36	39	41	43	B: 47
10/15/97 Wed	1827)	18	25	30	40	45	46	B: 14

There's MUCH MORE below!
... Complete draw history.
... Game statistics.

▼

What Else is in the Report? . . .

There isn't enough space here to show the entire report! **So, try it yourself . . .**

- Sums
 - Even/Odd Numbers
 - Low/High Numbers
 - Repeat Numbers from the previous draw
 - Consecutive Numbers
 - Wins inside Groups of Numbers
 - Numbers with High and Low Wins
 - Most Consistent Winning Numbers
 - Numbers with Strongest Trending
 - Numbers Most Overdue for a Win
- Now ... Try it with your game!**