

Another New Year begins, with new hopes and wishes for people.

Everyone hopes the world may enjoy a year of peace. Thoughts go out to friends, family, and to people we meet – for happiness and smooth travels through the days ahead.

Let us add one more wish for lottery players: that 1998 brings you the best of success -- and full enjoyment -- in playing your favorite lottery games.

And of course, we'll do everything we can to help you make that happen.

And ... a New Year for WinIt!

Your *WinIt!* newsletter now enters its *seventh* year of publication.

In recent issues, we've been highlighting how your 'Fast Track Game Manager' works. You've seen how to scan all of the Lotto games automatically – with one mouse click. You've seen how to get a combined report for comparing your game against the others. And, you've seen how to enter numbers, to find their winning records in multiple games.

Starting with this new issue, you'll get some deeper views into your 'Lotto' software.

Good luck -- and *WinIt!* CDEX

Coming in the next issue . . .

- **Your Lotto WINS Menu (Part 1)**

Visit LD on the World Wide Web ...
<http://www.ldir.com>

In this issue . . .

- **Renewing Our Pledge to You**
- **Setting a 'Holiday' Schedule**

Renewing Our Pledge to You

In each New Year issue we state our pledge to Lottery Director players. Let's renew it now.

- For 1998, we'll continue to supply you with the finest lottery game software, combined with top quality support.
- We'll continue to maintain the highest ethical standards among lottery software producers. *You deserve it.*
- We respect your right to complete privacy. We *do not* release LD players' names, addresses, or other information to mail lists, advertisers, or other places.

Did You Know?

'2000' Ready: If you have been following the news, you've probably heard about the problems that many software programs will have – in going from the year 1999 to 2000. That can cause havoc with the way some programs track the dates. *No problem here* – Lottery Director is *already* setup and ready.

Sorting Your Lotto Wheels: Remember, you can sort your Lotto Wheels Directory. Click on the label at the top of each column – to see wheels, numbers, and prize guarantees.

(Continued on the next page . . .)

Setting a 'Holiday' Schedule

When you receive your Lottery Director software, each game's draw history is already installed. Your software already 'knows' the date and winning numbers for each draw.

But . . . What happens if your game changes its regular schedule, due to a holiday?

For example, a draw that was originally scheduled for 12/25 might get moved to 12/24 or 12/26. Or, the lottery might simply 'skip' the draw -- bypass it -- and have no draw at all on that date.

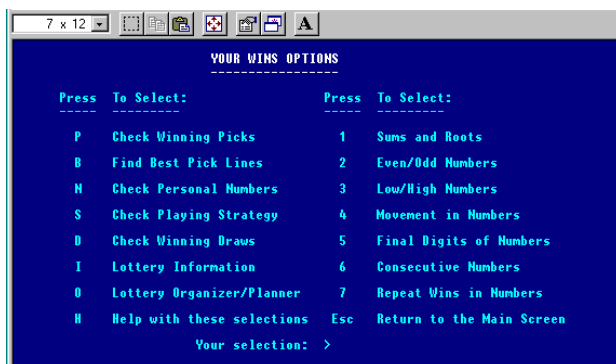
Here is how to take care of a 'holiday' change -- a one-draw change in your game's schedule. Just use your '**Lottery Organizer and Planner**'. It's on your Lotto program's WINS menu.

Would You Like to Try It? Start your Lotto program now. Select your **Practice Program**.

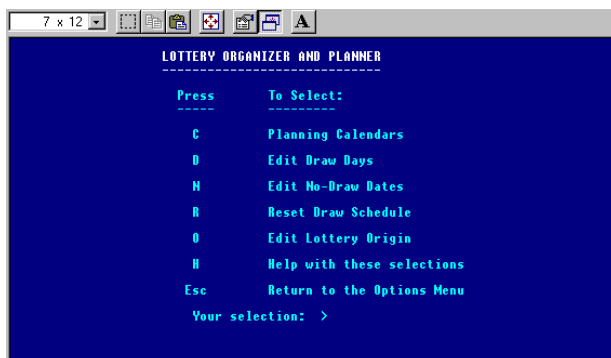
Note: Use your **Practice Program** to do this first -- don't change your own game yet!

Your Lottery Organizer/Planner

At the MAIN screen, go to your WINS menu. Here is your WINS menu:



Select: O (Lottery Organizer/Planner). Here is your Organizer and Planner menu:

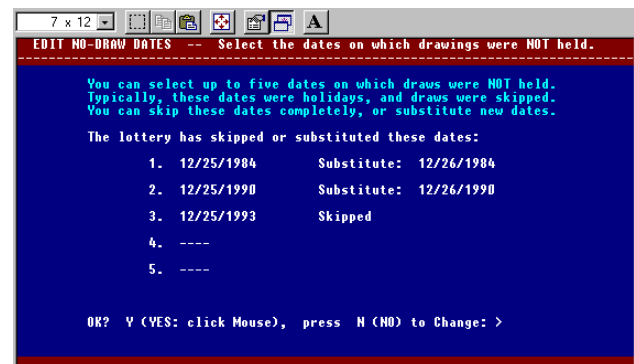


Select: N (Edit No-Draw Dates). In this example, we are going to make a 'holiday' change -- a one-draw date change.

See the screen example in the next column. It shows that three draws already changed.

In two draws, a new date was 'substituted' -- the draw was held on a different date.

On the third line, the draw was 'skipped' -- meaning that it was not held at all.



Adding a Change: Your screen asks if this is 'OK? (Yes or No)'. To make a new change in the schedule, press: N (NO).

1. First, your screen will ask you to select a 'No-Draw Date (1 to 5)'. Select the next available line on your screen.

2. Next, it will ask you to 'Enter the draw date (Month, Day, and Year) to be changed'.

3. Then it will ask you to either 'Skip' that date, or to 'Substitute' a new date for it.

If you are using your **Practice Program**, feel free to experiment with these options.

(Don't change your own game's schedule unless your lottery actually made a change.)