

It's always a pleasure! -- when a new software program is released.

Lottery Director Free Wheeling is ready.

It's shipping to players worldwide.

LD Free Wheeling hasn't been a secret at all. If you have an Internet connection, and browsed around the Lottery Director Web site -- you've probably noticed the software there.

It has been available (and still is) for a free download at your Web site.

Now **LD Free Wheeling** is available on disk. Players can order it now, and it is shipping immediately.

Free Wheeling installs in less than a minute. It runs in Windows 95, 98, and 3.1, and DOS.

The disk version includes a fully illustrated guidebook, and a handy wheeling log to help you keep track of how you are making and testing your wheels.

Your WINS Menu. Starting with this issue, you'll see how to navigate one of the most important menus in your Lottery Director Lotto software -- your WINS menu.

Good luck -- and **WinIt!** CDEX

Coming in the next issue . . .

• **Your Lotto WINS Menu (Part 2)**

Visit LD on the World Wide Web ...

<http://www.ldir.com>

In this issue . . .

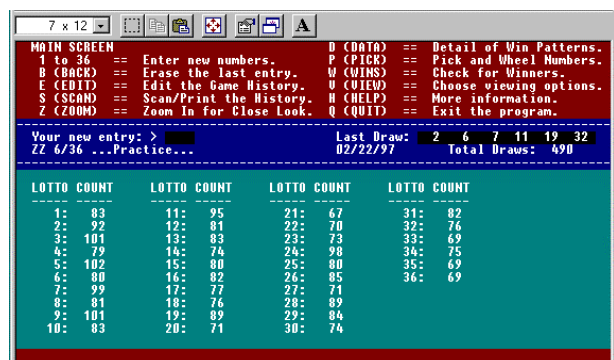
- **Announced: Free Wheeling**
- **Your Lotto WINS Menu (Part 1)**

Your Lotto WINS Menu (Part 1)

In your two main Lottery Director programs (for Lotto, and for Pick-3/4 games), you have a menu called the WINS menu. You get to it from your MAIN screen.

In this **WinIt!**, you'll be seeing the WINS menu that's in your Lotto software.

Ready? Start your Lottery Director Lotto program, and select your game. You'll always see your MAIN screen first.



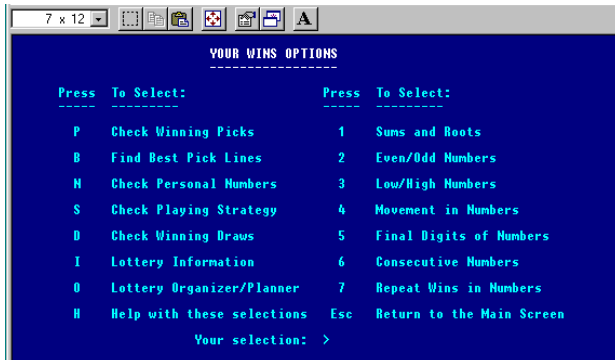
The top of your screen (the Red area) always shows your mouse and keyboard options.

Select W (WINS) to go to your WINS menu. You can just press W, or click your left mouse button anywhere on that option line.

(Continued on the next page . . .)

Your WINS Menu

Your WINS menu gives you many options for checking your game. It's easy to sort them out.



The selections fall into three areas:

- **Checking Your Playing Strategy**
- **Checking Filters for Wheeling**
- **Organizing Your Game.**

Let's look at each of these areas now.

Checking Your Playing Strategy You can check the ways you pick numbers. You can find out how your 'pick' methods are working for you, and see which ones are working best.

Notice that this is *different* from just checking the game's numbers -- 'how the numbers have won'. It's a step up above the numbers. It's checking 'how your methods of picking numbers are working'. It shows how the *strategies for choosing numbers* compare with each other.

Selections are: P (Check Winning Picks), B (Find Best Pick Lines), N (Check Personal Numbers), S (Check Playing Strategy), and D (Check Winning Draws).

Checking Filters for Wheeling When you wheel your numbers (on your PICK menu), you have options for filtering your combinations. That's a good way to manage your strategy and cost. But . . . How can you find out how much filtering to use? What works best in your game?

That's what you see in the seven selections on the right side of your WINS menu. They show you how your filtering ranges match the winning numbers in your game -- in the recent draws, and long term. On each screen, you will first get an overview. Then you can go into the details.

Use your Automatic Scanning to find the win levels, with both visual and sound indicators. (To use sound, set your Sound Options ON, on your VIEW menu.) You can check these items:

1 (Sums and Roots), 2 (Even/Odd Numbers), 3 (Low/High Numbers), 4 (Movement in Numbers), 5 (Final Digits of Numbers), 6 (Consecutive Numbers), 7 (Repeat Wins in Numbers).

Organizing Your Game You have two options to help you stay organized in your game play. One of these (Lottery Information) gives you information about your game. This includes the odds at each prize level -- with and without Bonus numbers. The other (Lottery Organizer/Planner) gives you a menu called your Lottery Organizer and Planner menu. There you can view calendars of the past and future scheduled drawings in the game. You can make changes in the game's drawing schedule (for example, if the schedule changes due to a holiday).

These two selections are at the left side of your menu. They are: I (Lottery Information), and O (Lottery Organizer/Planner).

Next Issue: In the next *WinIt!*, you'll see more about: **Checking Your Playing Strategy.**